

Export Jobs To Microsoft Project

FMMS provides the means to export Job data to Microsoft Project in the form of a Microsoft Project Exchange file (fmmsprex.mpx). The file is generated from the data contained in the Planning Chart - FMMS(fm_381) and is written to the location specified in the Constants Table :

- ?? file_proj_ex defines the exported file name
- ?? file_proj_path defines the exported file location

The function can only export Jobs. If Standard Activities and/or Work Requests are contained within the selected data, the process is disabled.

The exported data is contained in a delimited file. The delimiting character being an '@' symbol. The user has only limited choice in the data to be exported. The choices are:

- ?? With Link Recommended = No
- ?? Originator Table or Resource Table Recommended = Resource Table
- ?? Date Format Recommended = dd/mm/yy

The data is exported in an order defined by FMMS, which is not compatible with the default provided by MS-Project. This means that the user must define a TABLE and VIEW for use by FMMS.

Tables are created in MS-Project by selecting from the menu:

View *↗* Table Entry *↗* More Tables then pressing the 'New' button

First, give the new table a name eg FMMS, then using the column dropdown lists, create the fields as shown below. It is recommended that the 'Show in menu' and 'Lock first column' boxes be checked

Table Definition in 'Project 1'

Name: Show in menu

Table

Field Name	Align Data	Width	Title	Align Title
Indicators	Left	6		Left
ID	Center	5		Center
Text1	Left	11	Job	Left
Text2	Left	4	Seq	Center
Text3	Left	26	Equipment	Left
Name	Left	33	Task Name	Left
Duration	Right	8		Center

Date format: Row height:

Lock first column

Complete List Of Fields Used

The table below shows the columns used by Alcoa of Australia in its standard FMMS View. The first nine columns MUST be placed in that order as it is the order in which they appear in the fmmsprex.mpx file.

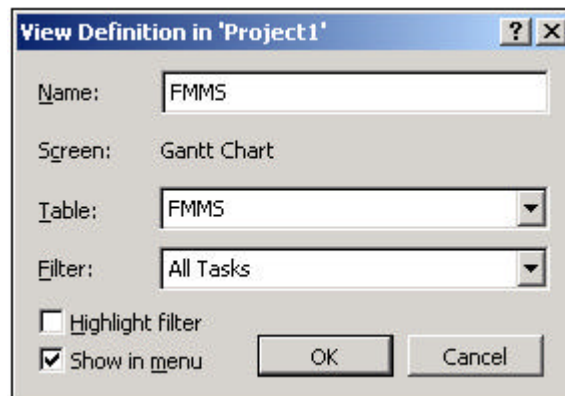
Field Name	Align Data	Width	Title	Align Title
Indicators	Left	6		Left
ID	Centre	5		Centre
Text1	Left	11	Job No	Left
Text2	Left	4	Sequence	Centre
Text3	Left	26	Equipment	Left
Name	Left	33	Task Name	Left
Duration	Right	8		Centre
Start	Right	12		Centre
Finish	Right	12		Centre
Text6	Left	40	Comments	Centre
Text4	Centre	3	Tag Required	Centre
Resource Names	Left	17		Centre
Text5	Left	17	Res Available	Centre

The remaining columns are optional and are not filled by data from FMMS, with the exception of Resource Names. These are not displayed but are contained within the field's Drop Down selection list.

Now create the VIEW, These are created in MS-Project by selecting from the menu:

View \searrow Table Entry \searrow More Views then pressing the 'New' button then select a 'Single View'.

Give the new view a name eg FMMS, then using the dropdown lists, select the FMMS table and the All Tasks filter. It is recommended that the 'Show in menu' box be checked



Tricks and Traps

- ?? Before opening the fmmsprex.mpx file in MS-Project, it is necessary to be in the FMMS View.
- ?? FMMS exports the Start and Finish dates of the job and its duration on the assumption that work on the job continues twenty-four hours per day. It is essential therefore to use a 24-Hour calendar in your MS-Project file, rather than the default calendar, which specifies an eight-hour workday.

To ensure that the above conditions are in place, it is recommended that an auto executing VBA macro be created along the following lines.

Module Name = frmFMMS_Standards

```
Sub Auto_Open()  
    ViewApply Name:="FMMS"  
    ProjectSummaryInfo Calendar:="24 hour CALENDAR"  
End Sub
```

- ?? Never use special characters such as quotation marks or the '@' character in a Job Description. MS-Project will misinterpret the contents of the Description and merge it with the Duration column during the conversion. This will result in an error for each project line with such Description.
- ?? Don't forget that FMMS can only export Jobs. If Standard Activities and/or Work Requests are contained within the selected data, the Export to MS-Project export icon will be disabled.